

TORC OIL & GAS LTD.

EAST MANSON UNIT #9

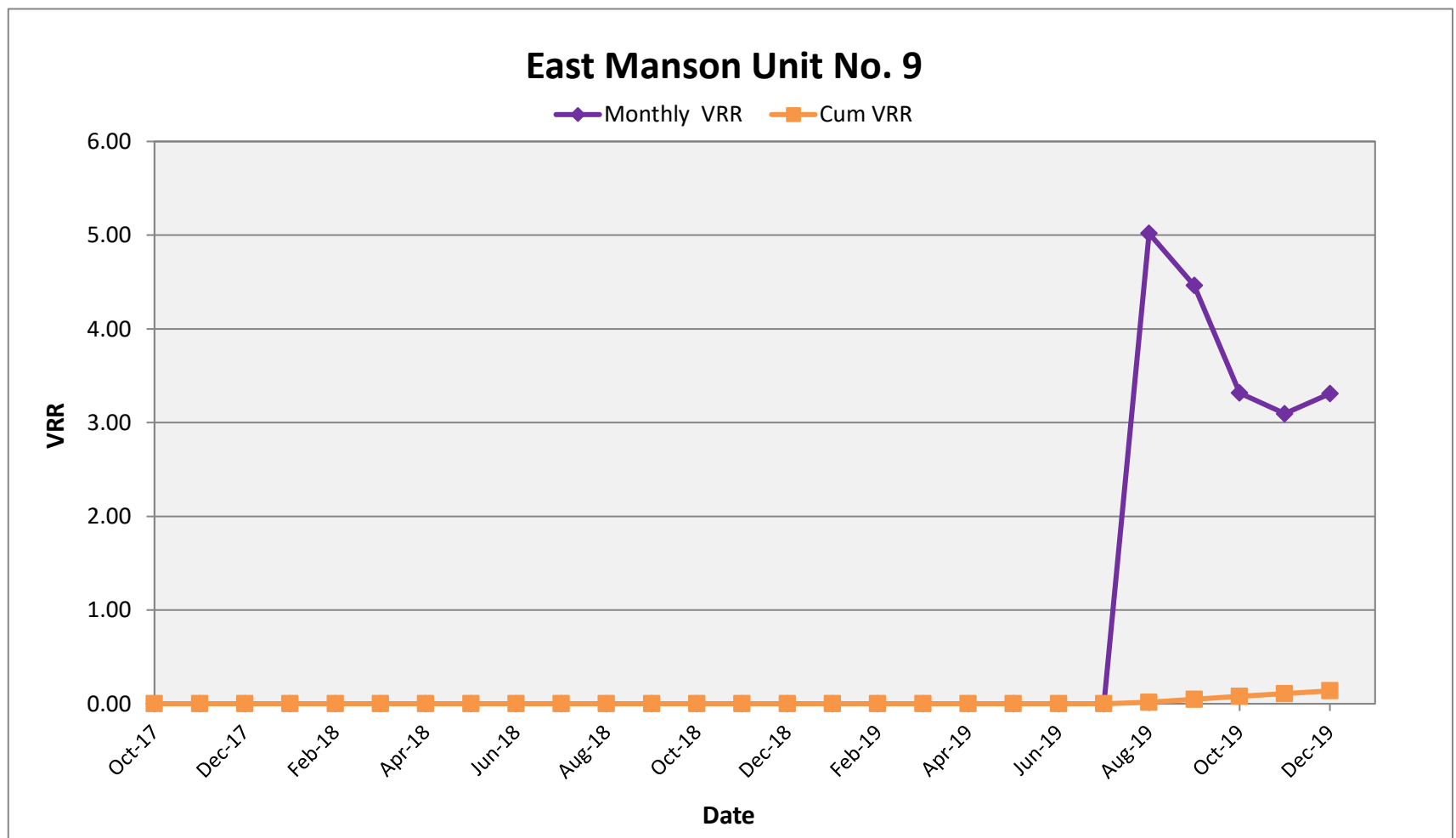
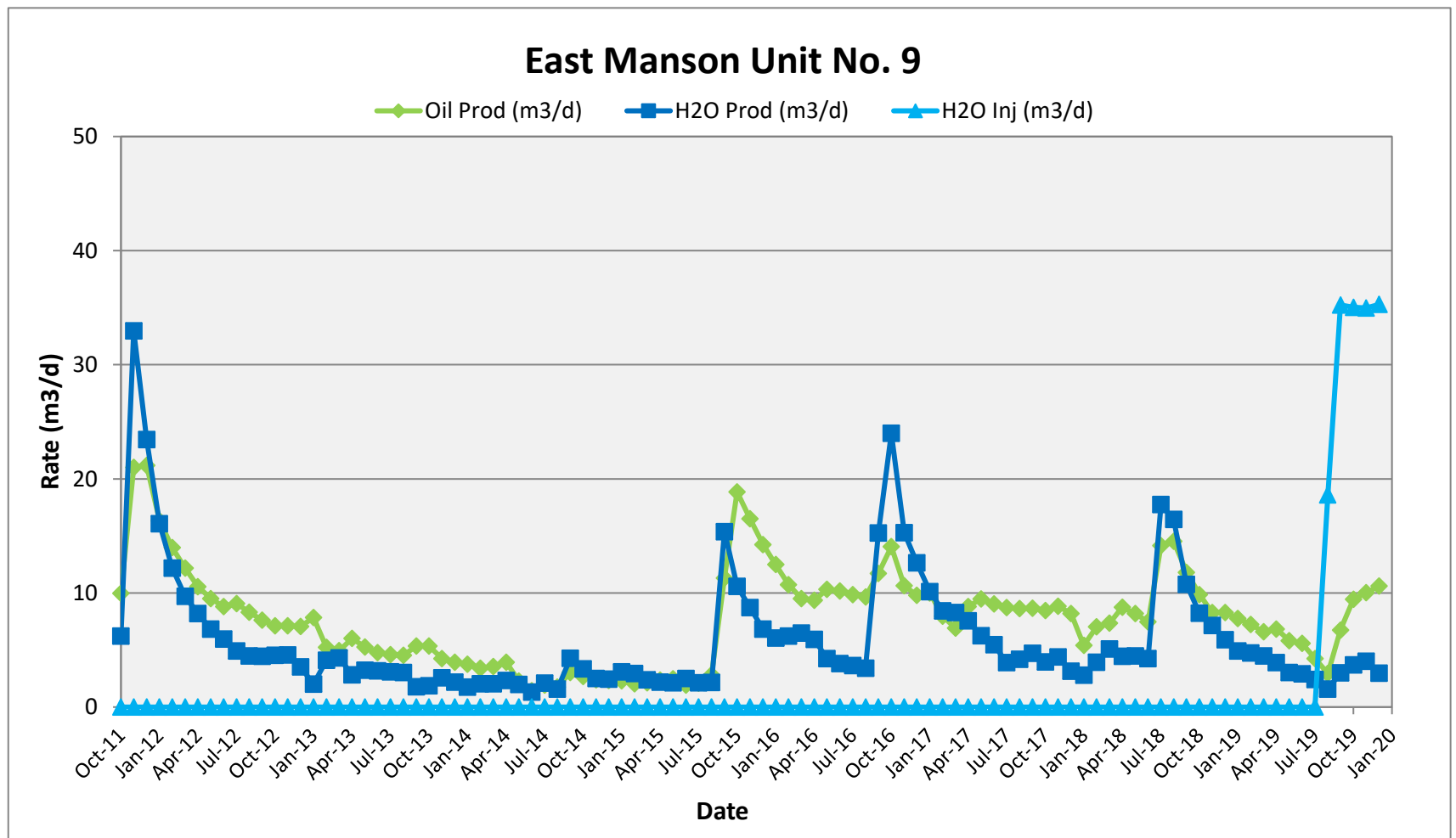
ENHANCED OIL RECOVERY (EOR) ANNUAL REPORT

Discussion:

East Manson Unit #9 was created in 2019 with the intention to initiate a waterflood. In the summer of 2019, 2 wells were converted to injection and the offsetting response has been strong.

TORC will continue to monitor this new waterflood and make adjustments as required.

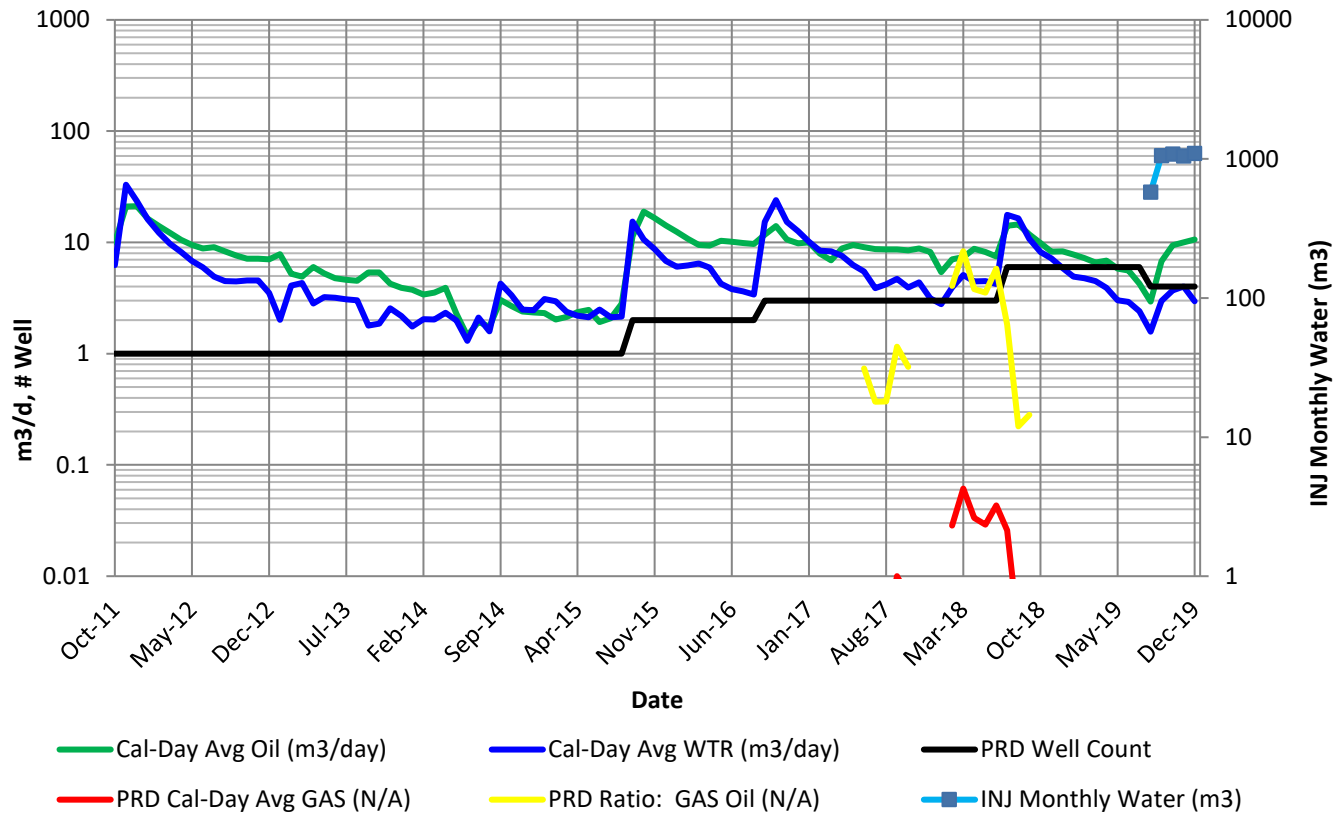
	Date	Oil Prod (m3/d)	Gas Prod (e3m3/d)	H2O Prod (m3/d)	H2O Inj (m3/d)	Monthly VRR	Cum VRR	Cum PRD Oil (m3)	Cum PRD Gas (e3m3)	Cum PRD Water (m3)	Cum INJ Water (m3)
EMU No.9	Dec-2019	11	-	3	35	3.31	0.138	23,473	8	17,694	4,862



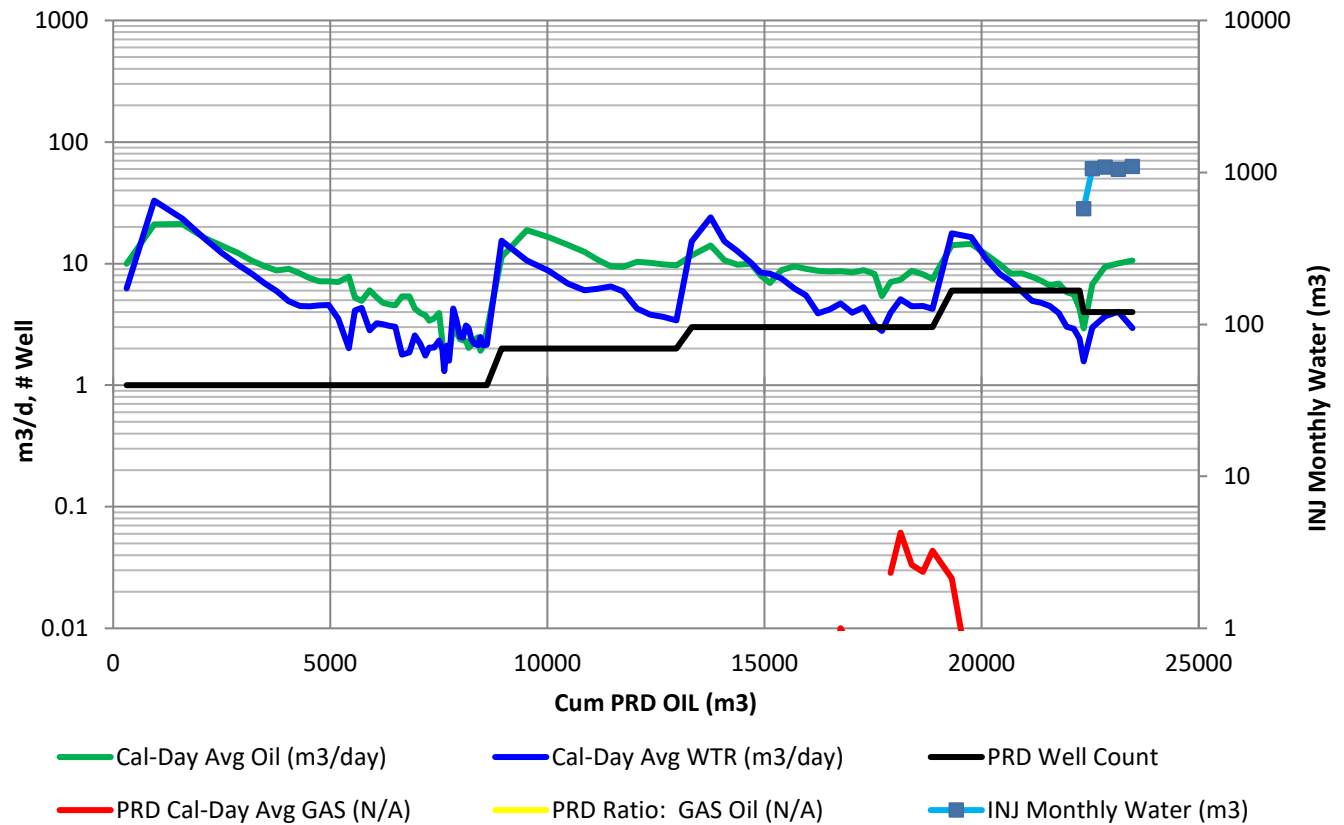
East Manson Unit No. 9 - VRR Table (Section 15 & 16-013-28W1)																										
Month	Days	Monthly Oil Prod (bbl)	Monthly Oil Prod (m3)	Monthly Gas Prod (E3m3)	Monthly H2O Prod (bbl)	Monthly H2O Prod (m3)	Monthly H2O Inj (bbl)	Monthly H2O Inj (m3)	Oil Prod (m3/d)	Gas Prod (E3m3/d)	H2O Prod (m3/d)	H2O Inj (m3/d)	Cum Oil (bbl)	Cum Oil (m3)	Cum Gas (E3m3)	Cum H2O (m3)	Cum H2O Inj (m3)	Prod Well Count	GOR (m3/m3)	H2OCut %	Voidage (rm3/d)	Monthly VRR	Cum GOR (m3/m3)	H2OCut %	Cum Void (rm3)	Cum VRR
Oct-11	31	1,946	309.3	0	1,216	193.3	0	0	10	0	6	0	1,946	309	0	193	0	1	0	38.5%	14	0.00	0.0	38.5%	420.1	0.000
Nov-11	30	3,965	630.3	0	6,223	989.4	0	0	21	0	33	0	5,910	940	0	1183	0	1	0	61.1%	48	0.00	0.0	55.7%	1874.6	0.000
Dec-11	31	4,127	656.1	0	4,573	727.0	0	0	21	0	23	0	10,037	1596	0	1910	0	1	0	52.6%	39	0.00	0.0	54.5%	3084.2	0.000
Jan-12	31	3,185	506.4	0	3,133	498.1	0	0	16	0	16	0	13,223	2102	0	2408	0	1	0	49.6%	28	0.00	0.0	53.4%	3954.6	0.000
Feb-12	29	2,551	405.6	0	2,223	353.5	0	0	14	0	12	0	15,774	2508	0	2761	0	1	0	46.6%	22	0.00	0.0	52.4%	4605.9	0.000
Mar-12	31	2,372	377.2	0	1,894	301.1	0	0	12	0	10	0	18,146	2885	0	3062	0	1	0	44.4%	19	0.00	0.0	51.5%	5183.9	0.000
Apr-12	30	1,991	316.5	0	1,547	246.0	0	0	11	0	8	0	20,137	3201	0	3308	0	1	0	43.7%	16	0.00	0.0	50.8%	5662.3	0.000
May-12	31	1,851	294.3	0	1,333	211.9	0	0	9	0	7	0	21,989	3496	0	3520	0	1	0	41.9%	14	0.00	0.0	50.2%	6090.1	0.000
Jun-12	30	1,662	264.2	0	1,125	178.9	0	0	9	0	6	0	23,650	3760	0	3699	0	1	0	40.4%	12	0.00	0.0	49.6%	6462.8	0.000
Jul-12	31	1,766	280.7	0	958	152.3	0	0	9	0	5	0	25,416	4041	0	3851	0	1	0	35.2%	12	0.00	0.0	48.8%	6820.7	0.000
Aug-12	31	1,622	257.8	0	873	138.8	0	0	8	0	4	0	27,038	4299	0	3990	0	1	0	35.0%	11	0.00	0.0	48.1%	7148.4	0.000
Sep-12	30	1,436	228.3	0	841	133.8	0	0	8	0	4	0	28,474	4527	0	4124	0	1	0	36.9%	10	0.00	0.0	47.7%	7449.5	0.000
Oct-12	31	1,389	220.9	0	885	140.8	0	0	7	0	5	0	29,863	4748	0	4265	0	1	0	38.9%	10	0.00	0.0	47.3%	7752.2	0.000
Nov-12	30	1,347	214.1	0	861	136.9	0	0	7	0	5	0	31,210	4962	0	4402	0	1	0	39.0%	10	0.00	0.0	47.0%	8046.1	0.000
Dec-12	31	1,375	218.6	0	684	108.7	0	0	7	0	4	0	32,585	5180	0	4510	0	1	0	33.2%	9	0.00	0.0	46.5%	8314.9	0.000
Jan-13	31	1,529	243.1	0	393	62.5	0	0	8	0	2	0	34,114	5424	0	4573	0	1	0	20.5%	8	0.00	0.0	45.7%	8555.3	0.000
Feb-13	28	921	146.5	0	723	115.0	0	0	5	0	4	0	35,036	5570	0	4688	0	1	0	44.0%	8	0.00	0.0	45.7%	8777.7	0.000
Mar-13	31	963	153.1	0	841	133.7	0	0	5	0	4	0	35,998	5723	0	4821	0	1	0	46.6%	8	0.00	0.0	45.7%	9023.8	0.000
Apr-13	30	1,136	180.6	0	534	84.9	0	0	6	0	3	0	37,134	5904	0	4906	0	1	0	32.0%	7	0.00	0.0	45.4%	9241.0	0.000
May-13	31	1,027	163.3	0	629	100.0	0	0	5	0	3	0	38,161	6067	0	5006	0	1	0	38.0%	7	0.00	0.0	45.2%	9460.7	0.000
Jun-13	30	899	142.9	0	599	95.2	0	0	5	0	3	0	39,060	6210	0	5102	0	1	0	40.0%	7	0.00	0.0	45.1%	9660.7	0.000
Jul-13	31	898	142.8	0	599	95.2	0	0	5	0	3	0	39,958	6353	0	5197	0	1	0	40.0%	6	0.00	0.0	45.0%	9860.7	0.000
Aug-13	31	883	140.4	0	589	93.6	0	0	5	0	3	0	40,841	6493	0	5291	0	1	0	40.0%	6	0.00	0.0	44.9%	10057.3	0.000
Sep-13	30	1,011	160.8	0	337	53.5	0	0	5	0	2	0	41,852	6654	0	5344	0	1	0	25.0%	6	0.00	0.0	44.5%	10228.4	0.000
Oct-13	31	1,045	166.2	0	363	57.7	0	0	5	0	2	0	42,897	6820	0	5402	0	1	0	25.8%	6	0.00	0.0	44.2%	10407.7	0.000
Nov-13	30	804	127.9	0	484	76.9	0	0	4	0	3	0	43,701	6948	0	5479	0	1	0	37.6%	6	0.00	0.0	44.1%	10578.4	0.000
Dec-13	31	763	121.4	0	427	67.8	0	0	4	0	2	0	44,465	7069	0	5547	0	1	0	35.9%	5	0.00	0.0	44.0%	10735.2	0.000
Jan-14	31	732	116.4	0	342	54.4	0	0	4	0	2	0	45,197	7185	0	5601	0	1	0	31.9%	5	0.00	0.0	43.8%	10874.8	0.000
Feb-14	28	598	95.0	0	359	57.0	0	0	3	0	2	0	45,794	7281	0	5658	0	1	0	37.5%	5	0.00	0.0	43.7%	11001.5	0.000
Mar-14	31	691	109.9	0	396	63.0	0	0	4	0	2	0	46,485	7390	0	5721	0	1	0	36.5%	5	0.00	0.0	43.6%	11145.0	0.000
Apr-14	30	739	117.5	0	439	69.8	0	0	4	0	2	0	47,224	7508	0	5791	0	1	0	37.3%	5	0.00	0.0	43.5%	11301.0	0.000
May-14	31	446	70.8	0	388	61.6	0	0	2	0	2	0	47,670	7579	0	5853	0	1	0	46.5%	4	0.00	0.0	43.6%	11414.6	0.000
Jun-14	30	272	43.3	0	246	39.1	0	0	1	0	1	0	47,942	7622	0	5892	0	1	0	47.5%	2	0.00	0.0	43.6%	11485.6	0.000
Jul-14	31	378	60.0	0	411	65.3	0	0	2	0	2	0	48,320	7682	0	5957	0	1	0	52.1%	4	0.00	0.0	43.7%	11595.0	0.000
Aug-14	31	340	54.1	0	310	49.2	0	0	2	0	2	0	48,660	7736	0	6006	0	1	0	47.6%	3	0.00	0.0	43.7%	11684.0	0.000
Sep-14	30	574	91.2	0	805	128.0	0	0	3	0	4	0	49,234	7827	0	6134	0	1	0	58.4%	7	0.00	0.0	43.9%	11879.2	0.000
Oct-14	31	521	82.8	0	653	103.7	0	0	3	0	3	0	49,755	7910	0	6238	0	1	0	55.6%	5	0.00	0.0	44.1%	12044.0	0.000
Nov-14	30	451	71.7	0	471	74.9	0	0	2	0	2	0	50,206	7982	0	6313	0	1	0	51.1%	4	0.00	0.0	44.2%	12171.7	0.000
Dec-14	31	456	72.5	0	478	76.0	0	0	2	0	2	0	50,663	8054	0	6389	0	1	0	51.2%	4	0.00	0.0	44.2%	12301.0	0.000
Jan-15	31	451	71.6	0	602	95.7	0	0	2	0	3	0	51,113	8126	0	6485	0	1	0	57.2%	5	0.00	0.0	44.4%	12449.5	0.000
Feb-15	28	357	56.7	0	520	82.7	0	0	2	0	3	0	51,470	8183	0	6567	0	1	0	59.3%	4	0.00	0.0	44.5%	12574.1	0.000
Mar-15	31	417	66.2	0	463	73.6	0	0	2	0	2	0	51,887	8249	0	6641	0	1	0	52.6%	4	0.00	0.0	44.6%	12696.5	0.000
Apr-15	30	445	70.7	0	415	65.9	0	0	2	0	2	0	52,332	8320	0	6707	0	1	0	48.2%	4	0.00	0.0	44.6%	12814.4	0.000
May-15	31	482	76.6	0	413	65.7	0	0	2	0	2	0	52,814	8396	0	6773	0	1	0	46.2%	4	0.00	0.0	44.6%	12936.4	0.000
Jun-15	30	362	57.6	0	471	74.8	0	0	2	0	2	0	53,176	8454	0	6848	0	1	0	56.5%	4	0.00	0.0	44.8%	13053.7	0.000
Jul-15	31	407	64.7	0	414	65.8	0	0	2	0	2	0	53,583	8519	0	6913	0	1	0	50.4%	4	0.00	0.0	44.8%	13167.1	0.000
Aug-15	31	549	87.2	0	420	66.8	0	0	3	0	2	0	54,132	8606	0	6980	0	1	0	43.4%	4	0.00	0.0	44.8%	13297.9	0.000
Sep-15	30	2,136	339.6	0	2,903	461.5	0	0	11	0	15	0	56,268	8946	0	7442	0	2	0	57.6%	24	0.00	0.0	45.4%	14009.7	0.000
Oct-15	31	3,676	584.5	0	2,065	328.3	0	0	19	0	11	0	59,944	9530	0	7770	0	2	0	36.0%	24	0.00	0.0	44.9%	14766.3	0.000
Nov-15	30	3,114	495.1	0	1,647	261.8	0	0	17	0	9	0	63,058	10025	0	8032	0	2	0	34.6%	21	0.00	0.0	44.5%	15390.9	0.000
Dec-15	31	2,779	441.8	0	1,333	211.9	0	0	14	0	7	0	65,837	10467	0	8244	0	2	0	32.4%	17	0.00	0.0	44.1%	15926.4	0.000
Jan-16	31	2,434	387.0	0	1,179	187.4	0	0	12	0	6	0	68,271	10854	0	8431	0	2	0	32.6%	15	0.00	0.0	43.7%	16397.2	0.000
Feb-16	29	1,958	311.3	0	1,135	180.5	0	0	11	0	6	0	70,230	11165	0	8612	0	2	0	36.7%	14	0.00	0.0	43.5%	16805.9	0.000
Mar-16	31	1,851	294.2	0	1,264	200.9	0	0	9	0	6	0	72,080	11460	0	8813	0	2	0	40.6%	13	0.00	0.0	43.5%	17222.6	0.000
Apr-16	30	1,766	280.8	0	1,119	177.9	0	0	9	0	6	0	73,847	11740	0	8990	0	2	0	38.8%	13	0.00	0.0	43.4%	17606.4	0.000
May-16	31	2,013	320.0	0	830																					

East Manson Unit No. 9 - VRR Table (Section 15 & 16-013-28W1)																											
Month	Days	Monthly Oil Prod (bbl)	Monthly Oil Prod (m3)	Monthly Gas Prod (E3m3)	Monthly H2O Prod (bbl)	Monthly H2O Prod (m3)	Monthly H2O Inj (bbl)	Monthly H2O Inj (m3)	Oil Prod (m3/d)	Gas Prod (E3m3/d)	H2O Prod (m3/d)	H2O Inj (m3/d)	Cum Oil (bbl)	Cum Oil (m3)	Cum Gas (E3m3)	Cum H2O (m3)	Cum H2O Inj (m3)	Prod Well Count	GOR (m3/m3)	H2OCut %	Voidage (rm3/d)	Monthly VRR	Cum GOR (m3/m3)	H2OCut %	Cum Void (rm3)	Cum VRR	
Jun-17	30	1,705	271.0	0.2	1,033	164.3	0	0	9	0	5	0	100,368	15957	0	12898	0	3	1	37.7%	13	0.00	0.0	44.7%	24625.8	0.000	
Jul-17	31	1,699	270.1	0.1	758	120.6	0	0	9	0	4	0	102,067	16227	0	13018	0	3	0	30.9%	10	0.00	0.0	44.5%	24951.2	0.000	
Aug-17	31	1,685	267.9	0.1	819	130.3	0	0	9	0	4	0	103,752	16495	0	13149	0	3	0	32.7%	11	0.00	0.0	44.4%	25284.8	0.000	
Sep-17	30	1,636	260.0	0.3	887	141.1	0	0	9	0	5	0	105,388	16755	1	13290	0	3	1	35.2%	12	0.00	0.0	44.2%	25637.6	0.000	
Oct-17	31	1,652	262.6	0.2	769	122.3	0	0	8	0	4	0	107,040	17017	1	13412	0	3	1	31.8%	11	0.00	0.1	44.1%	25966.4	0.000	
Nov-17	30	1,667	265.0	0	826	131.4	0	0	9	0	4	0	108,707	17282	1	13543	0	3	0	33.1%	11	0.00	0.1	43.9%	26291.9	0.000	
Dec-17	31	1,599	254.2	0.2	612	97.2	0	0	8	0	3	0	110,306	17537	1	13641	0	3	1	27.7%	10	0.00	0.1	43.8%	26589.4	0.000	
Jan-18	31	1,056	167.9	0	544	86.5	0	0	5	0	3	0	111,362	17705	1	13727	0	3	0	34.0%	7	0.00	0.1	43.7%	26798.9	0.000	
Feb-18	28	1,241	197.3	0.8	693	110.2	0	0	7	0	4	0	112,603	17902	2	13837	0	3	4	35.8%	11	0.00	0.1	43.6%	27110.4	0.000	
Mar-18	31	1,435	228.1	1.9	992	157.8	0	0	7	0	5	0	114,037	18130	4	13995	0	3	8	40.9%	15	0.00	0.2	43.6%	27570.0	0.000	
Apr-18	30	1,651	262.5	1	841	133.8	0	0	9	0	4	0	115,689	18392	5	14129	0	3	4	33.8%	13	0.00	0.3	43.4%	27966.9	0.000	
May-18	31	1,597	253.8	0.9	876	139.3	0	0	8	0	4	0	117,285	18646	6	14268	0	3	4	35.4%	13	0.00	0.3	43.3%	28355.8	0.000	
Jun-18	30	1,410	224.1	1.3	799	127.1	0	0	7	0	4	0	118,695	18870	7	14395	0	3	6	36.2%	13	0.00	0.4	43.3%	28739.2	0.000	
Jul-18	31	2,757	438.3	0.8	3,459	550.0	0	0	14	0	18	0	121,452	19309	8	14945	0	6	2	55.6%	30	0.00	0.4	43.6%	29668.5	0.000	
Aug-18	31	2,831	450.0	0.1	3,207	509.8	0	0	15	0	16	0	124,282	19759	8	15455	0	6	0	53.1%	27	0.00	0.4	43.9%	30516.5	0.000	
Sep-18	30	2,229	354.4	0.1	2,030	322.7	0	0	12	0	11	0	126,511	20113	8	15778	0	6	0	47.7%	20	0.00	0.4	44.0%	31106.7	0.000	
Oct-18	31	1,924	305.8	0	1,602	254.7	0	0	10	0	8	0	128,435	20419	8	16033	0	6	0	45.4%	15	0.00	0.4	44.0%	31586.0	0.000	
Nov-18	30	1,563	248.5	0	1,352	214.9	0	0	8	0	7	0	129,998	20667	8	16247	0	6	0	46.4%	13	0.00	0.4	44.0%	31983.4	0.000	
Dec-18	31	1,617	257.0	0	1,151	183.0	0	0	8	0	6	0	131,615	20924	8	16430	0	6	0	41.6%	12	0.00	0.4	44.0%	32354.9	0.000	
Jan-19	31	1,514	240.7	0	960	152.7	0	0	8	0	5	0	133,129	21165	8	16583	0	6	0	38.8%	11	0.00	0.4	43.9%	32684.0	0.000	
Feb-19	28	1,272	202.3	0	837	133.1	0	0	7	0	5	0	134,401	21367	8	16716	0	6	0	39.7%	10	0.00	0.4	43.9%	32965.5	0.000	
Mar-19	31	1,288	204.7	0	875	139.2	0	0	7	0	4	0	135,689	21572	8	16855	0	6	0	40.5%	9	0.00	0.4	43.9%	33254.7	0.000	
Apr-19	30	1,292	205.4	0	738	117.4	0	0	7	0	4	0	136,981	21778	8	16973	0	6	0	36.4%	9	0.00	0.4	43.8%	33522.6	0.000	
May-19	31	1,132	180.0	0	590	93.7	0	0	6	0	3	0	138,113	21958	8	17066	0	6	0	34.2%	7	0.00	0.4	43.7%	33748.2	0.000	
Jun-19	30	1,052	167.3	0	551	87.6	0	0	6	0	3	0	139,165	22125	8	17154	0	6	0	34.4%	7	0.00	0.4	43.7%	33958.4	0.000	
Jul-19	31	831	132.1	0	470	74.7	0	0	4	0	2	0	139,996	22257	8	17229	0	6	0	36.1%	6	0.00	0.4	43.6%	34129.9	0.000	
Aug-19	31	572	90.9	0	306	48.7	3,623	576	3	0	2	19	140,568	22348	8	17277	576	4	0	34.9%	4	5.02	0.4	43.6%	34245.3	0.017	
Sep-19	30	1,275	202.7	0	563	89.5	6,648	1,057	7	0	3	35	141,843	22550	8	17367	1633	4	0	30.6%	8	4.46	0.4	43.5%	34483.3	0.048	
Oct-19	31	1,843	292.9	0	721	114.6	6,829	1,086	9	0	4	35	143,685	22843	8	17482	2719	4	0	28.1%	11	3.32	0.4	43.4%	34812.2	0.078	
Nov-19	30	1,892	300.8	0	758	120.5	6,600	1,049	10	0	4	35	145,577	23144	8	17602	3768	4	0	28.6%	11	3.10	0.3	43.2%	35152.9	0.108	
Dec-19	31	2,068	328.8	0	576	91.6	6,880	1,094	11	0	3	35	147,645	23473	8	17694	4862	4	0	21.8%	11	3.31	0.3	43.0%	35485.0	0.138	

East Manson Unit No. 9 - Rate Time



East Manson Unit No. 9 - Rate Cum

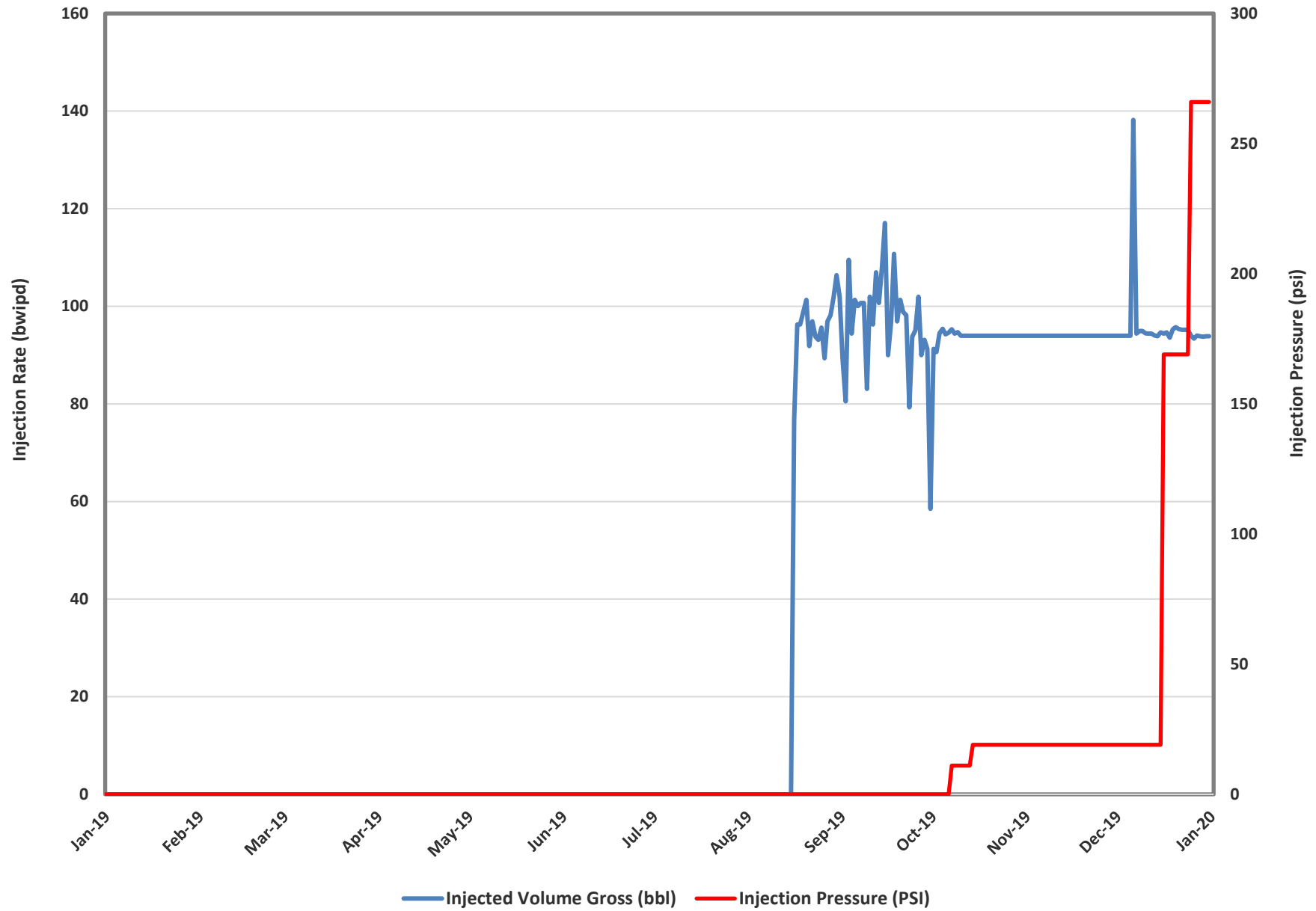


East Manson Unit No. 9 - Injection Parameters

Month	Oil Rate (m3/d)	Gas Rate (e3m3/d)	Water Rate (m3/d)	Water Inj Rate (m3/d)	Cum Oil (m3)	Cum Gas (e3m3)	Cum Water (m3)	Cum Inj Water (m3)	GOR (m3/m3)	WOR (m3/m3)
Jan-19	7.8	0.0	4.9	0.0	21,165	8.0	16,583	0.0	0	0.63
Feb-19	7.2	0.0	4.8	0.0	21,367	8.0	16,716	0.0	0	0.66
Mar-19	6.6	0.0	4.5	0.0	21,572	8.0	16,855	0.0	0	0.68
Apr-19	6.8	0.0	3.9	0.0	21,778	8.0	16,973	0.0	0	0.57
May-19	5.8	0.0	3.0	0.0	21,958	8.0	17,066	0.0	0	0.52
Jun-19	5.6	0.0	2.9	0.0	22,125	8.0	17,154	0.0	0	0.52
Jul-19	4.3	0.0	2.4	0.0	22,257	8.0	17,229	0.0	0	0.57
Aug-19	2.9	0.0	1.6	18.6	22,348	8.0	17,277	576.1	0	0.54
Sep-19	6.8	0.0	3.0	35.2	22,550	8.0	17,367	1632.9	0	0.44
Oct-19	9.4	0.0	3.7	35.0	22,843	8.0	17,482	2718.6	0	0.39
Nov-19	10.0	0.0	4.0	35.0	23,144	8.0	17,602	3767.9	0	0.40
Dec-19	10.6	0.0	3.0	35.3	23,473	8.0	17,694	4861.7	0	0.28

Month	02/10-16 Inj Press. (psi)	00/15-16 Inj Press. (psi)
Jan-19	0	0
Feb-19	0	0
Mar-19	0	0
Apr-19	0	0
May-19	0	0
Jun-19	0	0
Jul-19	118	0
Aug-19	0	0
Sep-19	0	0
Oct-19	14	9
Nov-19	19	114
Dec-19	0	312

02/10-16-013-28W1 Rate vs Pressure



00/15-16-013-28W1 Rate vs Pressure

